

3

Collection Instructions **BLOOD**

CONTENTS

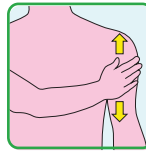
- Tasso
blood collection device
- Heat pack
- Test tube
- Razor, *optional*
- Alcohol swab
- Bandage
- Biohazard bag
- Absorbent pad

MATERIALS (Not Provided)

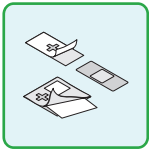
- Timer
- Pen
- Mirror



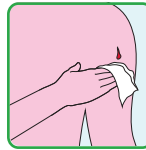
DO: Wash your hands before starting.



DO: If the heat pack doesn't activate, warm up the area by rubbing or do jumping jacks to get the blood flowing.



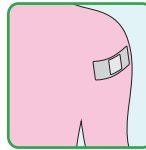
DO: Tear open the alcohol swab and remove the bandage from the wrapper before collecting the sample so they're ready to use.



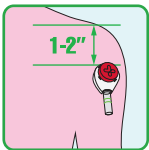
DO: Have a tissue handy to wipe any blood from your arm.



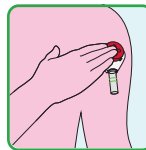
DO: Stand or sit in front of a mirror to help with placing the Tasso+™ device and seeing the fill line to know when to end collection.



DO: Apply the bandage if needed.



DO: Place the Tasso device 1–2 inches below the top of the shoulder.



DO: Press the red button for **2 seconds** and then release.

WARNINGS:

Not intended for more than one use. Do not use on more than one patient.

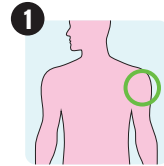
Improper use of blood lancets can increase the risk of inadvertent transmission of bloodborne pathogens, particularly in settings where multiple patients are tested.

3 Collection Instructions

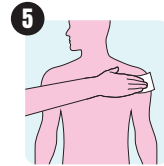
BLOOD



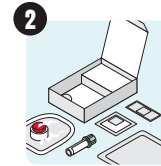
WAIT
Drink 1–2 glasses of water 30-minutes before taking your blood sample.



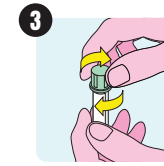
1 IDENTIFY COLLECTION SITE
for best results remove any hair using the provided razor.



5
Clean area with alcohol pad and allow to dry.



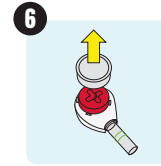
2
Collect all needed items. Remove device from tray.



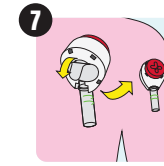
3
Twist off cap from tube.



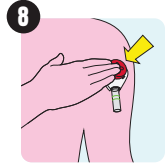
4
With fill lines facing out, press tube into device until snug.



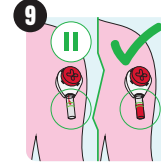
6
Remove clear plastic cover over red button.



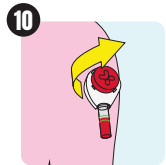
7
Peel tab away from device and stick device to shoulder. Hang arm straight down at side.



8
Press button all the way down for **2 seconds** and release. Only press the button ONCE. Set timer for 5 minutes. Watch tube fill using mirror as needed. You may not feel the device. Leave on 5 minutes or less if full.



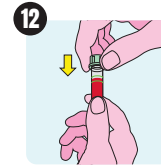
9
Blood may not appear for first 1-2 minutes. Remove device at 5 total minutes or sooner if blood reaches top line before 5 minutes.



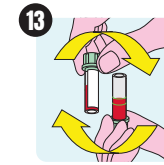
10
Remove device by peeling from one side. If needed, stop bleeding with bandage.



11
Remove tube with a slight twist and pull down.



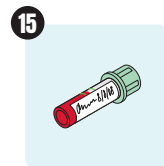
12
Snap cap fully onto tube.



13
Mix blood per manufacture labeling.



14
Dispose of all used materials according to local guidelines or procedures.



15
After collection, write your personal information and the date and time of collection on the **BLOOD** label, and place the label on the tube as shown.



16
Place the tube inside the biohazard bag with the absorbent pad.



If you've completed your **SWAB**, **URINE**, and **BLOOD** samples, you are ready to start the last step. See **PACKAGE + RETURN**.



SEE THE STEP-BY-STEP VIDEO FROM TASSO+™

Scan the QR code for step by step video instructions for the Tasso+ blood collection device.



TROUBLE COLLECTING YOUR BLOOD SAMPLE?

If you are unable to collect your blood sample using the Tasso+™ device, please use the blood spot card located in the **EXTRA** box of this kit.



PRECAUTIONS

- For use only on a single patient. Discard the entire device after use.
- Do not use after expiration date.
- Single use only.
- Keep out of reach of children.
- Minor bruising or residual marks may occur at the sample collection site.
- Do not resterilize.
- For external use only.
- Use while seated as fainting may occur with any blood sampling procedure.
- Not for use on infant heels.
- Prescription use only.
- Refer to manufacturer's instructions for individual components.
- Do not use if device packaging has been opened or damaged.
- Users must validate use of product for their specific diagnostic assay.
- Use personal protective equipment when handling biohazardous materials.

DISPOSAL

Dispose of used device according to your local or state guidelines for disposal of used sharps as a biohazard material.

INTENDED USE

The Tasso+™ is a single-use blood lancing device intended for obtaining microliter capillary whole blood samples.

DEVICE DESCRIPTION

Tasso+™ is a sterile, disposable blood lancing device. When collecting a sample, the device is held onto the skin by a mild adhesive. A sterile lancet punctures the skin with a press of the button, simultaneously this creates a slight vacuum that helps capillary blood flow under gravity into a compatible tube. After a predefined time period, or when the tube is full, the device is peeled off the skin. The tube is removed and capped for transport. The lancet is single use and automatically retracts into the device in a safe position after use.

SYMBOLS

REF Catalog number

LOT Lot number


 Do not use if package is damaged

 Use by date

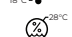
 Consult instructions for use

 This device contains sharps

 Single use only

 Do not resterilize

 Store at 18-28°C

 Transport at 25-85% RH

 Prescription use only

 Sterilized by irradiation