

1 Collection Instructions SWABS

CONTENTS

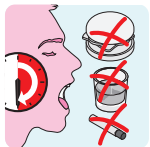
- Three (3) swabs
- Two (2) test tubes
- Two (2) biohazard bags
- Two (2) absorbent pads



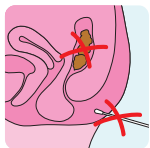
DO: Wash your hands before starting.



DO NOT pour liquid out of the tubes.



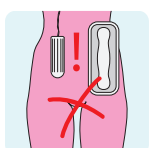
DO NOT eat, drink, smoke, use mouthwash, or other products by mouth for at least 30 minutes before beginning your test.



DO NOT try to collect the sample when feces are present in the rectum. Wait until after you've finished elimination.

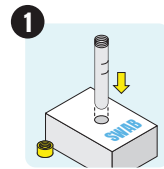


DO NOT use lubricants, hygiene products, or prescription products in the rectum or vagina prior to sample collection.

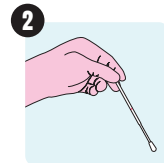


DO NOT collect vaginal specimens while menstruating.

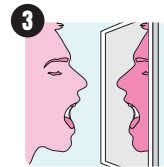
ORAL



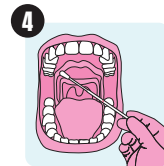
Open the **ORAL** package. Remove the tube cap. Place the tube in the hole on the top of the **SWAB** box so it stands upright.



Hold the swab between your thumb and forefinger.

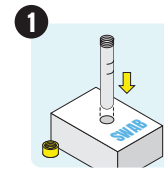


Open your mouth in front of a mirror and look at the back of your throat.

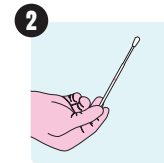


Gently rub the swab on the back of your throat using a circular motion for 3-5 seconds.

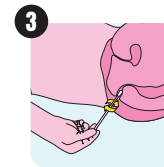
RECTAL



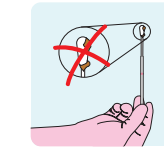
Open the **RECTAL** package. Remove the tube cap. Place the tube in the hole on the top of the **SWAB** box so it stands upright.



Hold the swab between your thumb and forefinger.

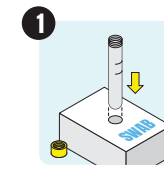


Gently insert the swab 1-2 inches (3-5 cm) into your rectum. Turn the swab for 5-10 seconds.

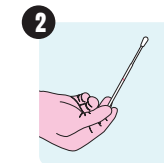


SAMPLE CONTAMINATION
If swab is contaminated with feces, discard. If not using the vaginal swab, use it to collect a new rectal sample.

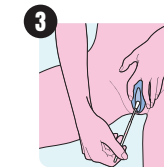
VAGINAL



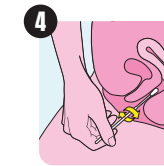
Open the **VAGINAL** swab. Remove the tube cap from the **RECTAL** tube. Place the tube in the hole on the top of the **SWAB** box so it stands upright.



With one hand, hold the swab between your thumb and forefinger.



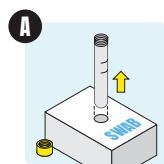
With the other hand, separate the folds of skin (labia) around the vaginal opening.



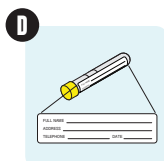
Insert the swab into the opening about 2 inches (5 cm). Turn the swab for 30 seconds against the vaginal wall.

AND

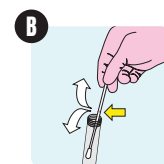
After finishing each section above, use the following to complete the sample before moving to the next sample:



Carefully remove the tube from the box.



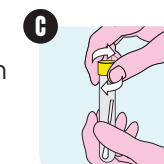
Write your information, date and time of collection on the **ORAL** and **RECTAL/VAGINAL** label. Place the label over the blue tube label.



Place the soft tip of the swab in the tube and break off the end of the swab.



Place the tube inside the biohazard bag with the absorbent pad.



Close the tube tightly to prevent leaks.



If you've completed your **SWAB** samples, you are ready to start the next step. See **URINE**.

WARNING: Do not pre-wet swabs with tube liquid or use lubricants to assist with collection. Handle the tubes carefully. Collection tube liquid can cause irritation if contact occurs with skin or other body parts. If contact occurs, immediately wash the affected area with plenty of soap and water for several minutes. If tube liquid gets in your eyes, immediately flush eyes with water for several minutes. If irritation occurs, seek medical attention.